
DDM Web: Intranet / Extranet Access to your Engineering Data

MultiCAD, Document and Project Data Management in one box!

Why DesignDataManager Web Client?

In addition to functionality provided by DDM Professional and DDM Office, many companies need to make engineering design information more widely available to other internal departments, and externally to their customers and supply chain.

DDM Web Client provides secure product lifecycle data sharing via the Internet Explorer web browser available on all Windows based computers.

Access Control

The DDM Access Control Lists enable companies to set their own business rules to determine 'who can see what' based on the User ID and current state of the item to be viewed, i.e. you may only want drawings to be available to suppliers and/or customers at a "Released" state, but remote project engineers to be able to see pre-released design data.

Engineering Change Note (ECN)

During the Engineering change process, the designers are automatically presented with a user interface where they can record what has changed and why. This information and full lifecycle history is all available through the web client environment.

Remote Access

Customers, suppliers, and off site personnel need access to the latest up to date design information. Through the use of secure login & passwords, these remote users can view live up to date design data and project information. As the DDM Web Client is a direct interface to the database, all of the information is presented real-time and requires no publishing by users.

View Parts, Assemblies, Documents and Drawings

Users can perform live metadata searches and view full part & assembly structures in addition to Bills of Materials.

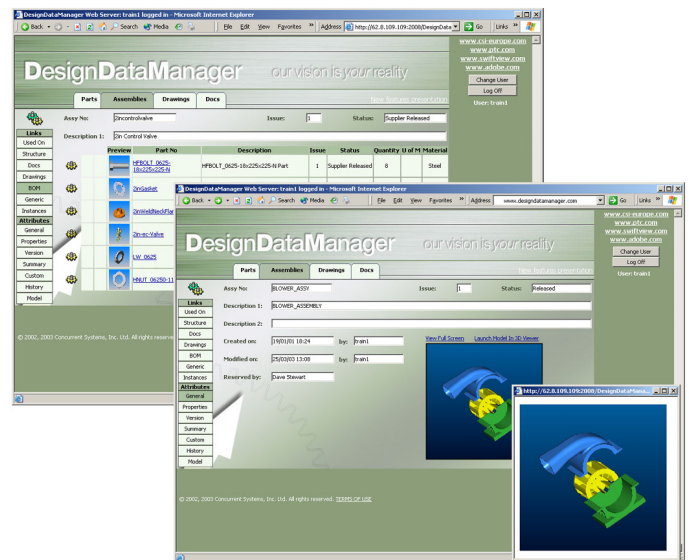
DDM supports thumbnails of parts, assemblies and automatically created PDF copies of drawings.

Single Site License

DDM Web has a server-based site license for unlimited users, providing controlled access to the information in the database over a corporate Intranet/Extranet and/or the Internet via the World Wide Web.

3D Model Viewing, Redline and Mark-up

For those companies who have a requirement to make 3D models viewable via Internet Explorer, DDM Web also supports Cimmetry Systems 'AutoVue Client-Server' product allowing the real time viewing, rotation, sectioning, mark up and collaboration of 2D and 3D CAD data. AutoVue supports multiple native 2D & 3D CAD systems, together with 2D applications, such as AutoCAD, PDF and Office Documents.



System requirements

Client

Internet Explorer

Server

Windows 2000/2003 Advanced Server
Windows XP Pro (Limited to 10 connections)
Windows 2000 Pro (Limited to 10 connections)
Internet Information Services (IIS)**
.NET Runtime Framework*

* The .NET framework is a freely available Microsoft component available through the Microsoft update website.

** IIS is a Microsoft component which is freely available by installing it from your operating system media.