
DDM RIFS: Remote (Intelligent) File Servers

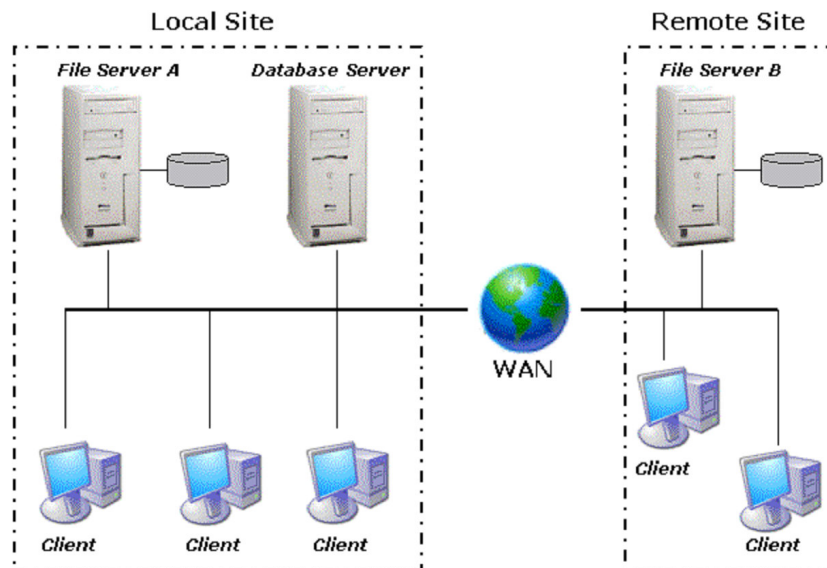
Product Description

The DesignDataManager Remote (Intelligent) File Servers are available to companies with a requirement to use DDM on multiple sites, with the sharing of physical models and the associated documentation between users on each site.

Benefits

- File vaults can be implemented on fast, local client networks.
- With files stored locally to the clients, quick access is provided.
- Access to files not stored on the local file server is provided as and when required, reducing costly WAN traffic.
- Reduced network traffic, leading to improved network performance.
- Any number of Remote File Servers can be implemented.
- Improved disk space management, due to files existing only in the file servers where they are being accessed.
- Improved security, ensuring files are available only to sites which have the required Access Controls.

The diagram below details a 'typical' Local & Remote DDM File Server scenario. There are no restrictions on the number of remote locations that can be supported.



Notes

For a single server installation of DesignDataManager, the standard single site file server is included with the server at no cost. For a multiple server installation of DesignDataManager, A Remote (Intelligent) File Server is required at each location, therefore including the Database Server location a minimum of two Remote (Intelligent) File Server licenses are required.

System Requirements

- Microsoft Windows 2000/2003 Advanced Server.
- 512mb RAM.
- TCP/IP Networking enabled.
- A minimum of 10mb disk space is required for software installation.
- Additional disk space as required for storing shared data files.