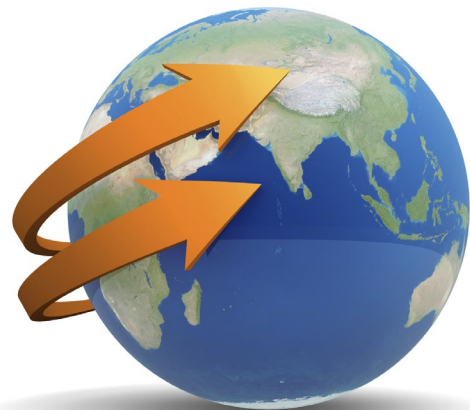


Office to enterprise Product Data Management

The DDM Web Client is a powerful interface which provides real time access to documents and information throughout your enterprise and supply chain.

Most people in business create and maintain information on a daily basis, usually to be referred to or used by someone else. Whether you are a small company or large multi-site enterprise, sharing your information in real time and in a controlled manner is critical to ensure a smooth running and efficient business. DDM Web Client provides search, view and print capabilities giving you real time access to your data anywhere that you need it.

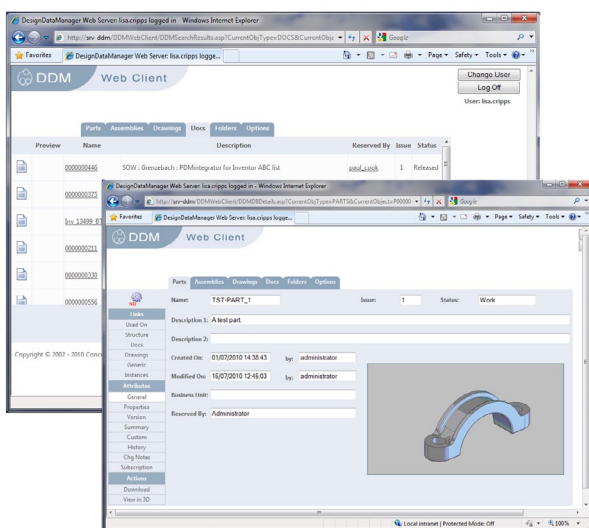


Key Features

- Easy to use browser interface
- Simple and advanced search capabilities
- Product and Bill of Material structure browsing
- Subscriptions and notifications
- Supports AutoVue web client for view, rotate, section, mark-up and collaborate on 2D and 3D data
- Supports DDM Business unit access controls
- Apply your own Client corporate colours and logo

Key Benefits

- Single unlimited multi user read only license
- No roll out costs
- Little to no user training requirement
- 24/7 access to product information and documents
- Real time sharing of data on a global scale
- Ensure data integrity and secure access
- Automatically notification of changes to data via subscriptions



The DDM web client is clear and easy to understand with little to no training requirement

Licensing and System Requirements

Server minimum requirements

Windows Server 2003 Standard / Server 2008
500mb Disk Space + Space for vaulting files

Licensing

Single unlimited multi user read only license

For more information visit our website.

For more information contact us now:

CSI Ltd

Tel: +44 (0)1635 551553

Email: info@csi-europe.com